



News for the week of June 13, 2016

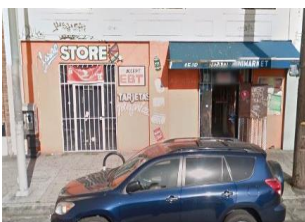
FORMER DROPOUTS ACHIEVE HIGH SCHOOL DIPLOMA AT BOYLE HEIGHTS CENTER

Maleny Torres, Christopher Mares, Erika Garcia Martinez and three dozen other students at Five Keys Charter in Boyle Heights recently crossed a finish line essential for workforce success: getting a high school diploma. “I knew I had to get that diploma,” said Maleny Torres, 20. “Because I would apply for jobs and never get a call back.” Maleny dropped out at 16 when she became pregnant with her son. When Romeo turned three, Maleny decided to reengage her education and found the perfect program at Five Keys Charter, housed at the Boyle Heights Technology YouthSource Center, an EWDD contractor. Maleny plans to next enroll in community college before transferring to a state university. “I see my path in life now, for me and for Romeo,” she said.

EWDD Professional Development: Workforce Development Division staff hosted a professional development training for employees on June 15, covering federal workforce law, a focus on in-demand industries and how to engage employers. Participants included staff from the Adult Operations, Planning and Procurement sections as well as new employees in the Youth Operations section. The daylong sessions were held at the East Los Angeles Skills Center.

Hire LA’s Youth Registrations: Registrations for this year’s Hire LA’s Youth summer jobs drive has reached 11,047. Youth ages 14 to 24 are enrolling for a chance to work –up to 120 hours, earning \$10.50 an hour, at libraries, parks, nonprofits, private businesses and faith-based organizations. Mayor Eric Garcetti has set a goal of connecting 15,000 youth with summer jobs in 2016.

Layoff aversion plan readied: EWDD’s Rapid Response team has been notified that Ardagh Metal Packaging in San Pedro is planning an undetermined number of layoffs. Rapid Response staff held an initial meeting June 14 to formulate a response plan.



Helping store owner—and the community: Million Sium turned to the South LA BusinessSource Center for guidance in acquiring LA Grocer, a community retail store in South Los Angeles. Once the purchase was finalized, the real work began in transforming a failing business into a vibrant community asset. Sium was determined to make a positive impact on his new community, especially families with school-age children. After

several consultations, he followed the South LA BusinessSource Center’s advice by adding fresh produce and a new a façade. The South LA BusinessSource Center assisted Sium with permitting and licensing, loan packaging and developing a social media campaign. Sium was approved for a \$25,000 loan, which included matching funds for marketing and construction and he is now planning a grand opening in August.

BusinessSource metrics:

LABSC’s Reporting: Central West, Harbor, Hollywood, North Valley, South LA, South Valley, West Valley, Mid-City & East Los Angeles	
Pre-Startups Enrolled	29
Pre-Startups Assisted	61
Start-ups/Operating Businesses Enrolled	29
Start-ups/Operating Businesses Assisted	25
Workshops: Number of Clients Attended	73

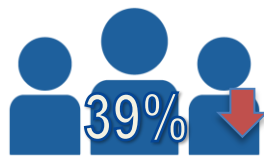
WORKFORCE METRICS

(Arrows indicate trend compared to previous week)

JobsLA (online and mobile)



Page Views



New Visitors



JobsLA Enrollment



New Sessions

WorkSource Centers



WorkSource Center Enrollments

“Updates” is produced by Catherine Saillant in EWDD’s communications department. If you have questions, comments or wish to contribute to an upcoming “Updates,” please contact Saillant at 213-744-9048 or at Catherine.Saillant@lacity.org.